

Q: Can the e-Drive support Linux Kernel version 2.3 or earlier.

A: No, the e-Drive only support Linux Kernel version 2.4.0 or over.

Q: Linux 2.4.x does not automatically recognize my e-Drive?

**A: Linux uses a so-called "USB Manager", which does automatically loads kernel modules (drivers) for USB devices. It loads only drivers for devices that are present on the USB bus to reduce memory usage. Per default, the USB Manager does not come with the e-Drive preconfigured. However, you can easily configure the USB Manager to automatically recognize the e-Drive yourself. Just add the following to the configuration file, usbmgr.conf (usually in /etc/usbmgr):
vendor 0xd7d product 0x100 module scsi_mod, usb-storage. This line identifies the e-Drive and tells the USB Manager to load the SCSI as well as the USB storage module. The SCSI module is needed in order to talk to both SCSI and USB storage devices, while the usb-storage module is needed to talk to USB storage devices.**

Do not forget to either reload the USB Manager's configuration or to restart the USB Manager (for instance, do as root: /etc/init.d/usbmgr reload).

Q: Which operating system can the e-Drive operate on?

A: The e-Drive can be operated on any of the following OS. Windows 98SE, Windows ME, Windows XP, Windows 2000, Mac 8.6 or above and Linux 2.4.0 or above.

Q: My computer cannot detect the e-Drive. What should I do?

A: If you are using Windows 98SE / Windows ME / Windows 2000 / Windows XP, make sure the USB function is enabled in the BIOS, and Windows has detected the USB port(s) successfully. Then install the e-Drive driver if necessary.

If you still have problem setting up the e-Drive, then contact one of our technician.

Q: What kind of data can be stored on the e-Drive?

A: You can save any type of files on the e-Drive, whether they are text, graphic,

program, music or multimedia files

Q: Will virus infect the e-Drive? How can I prevent it?

A: Yes, the e-Drive is just like your hard drive, it can get virus via any files that you save onto it. Therefore anti-virus software is recommended.

Q: Do I need to turn my computer off when installing the e-Drive?

A: No, the e-Drive is a hot plug and play device. You can install the e-Drive anytime you want, even with the computer on.

Q: Can the e-Drive work on earlier PC's?

A: Yes, as long as it has a USB connection interface available, and driver has been set up properly. Also the operating system must support USB devices.

Q: When the light is flashing on the e-Drive, what does that mean?

A: When the light is flashing, that means the e-Drive is in use and data transfer is taking place between the e-Drive and host machine.

Q: Is it safe to remove the e-Drive while files are being transferred?

A: No, when the light is flashing it means data transfer is taking place, do not remove the e-Drive as it may result in loss of file/data, or even damage the e-Drive.

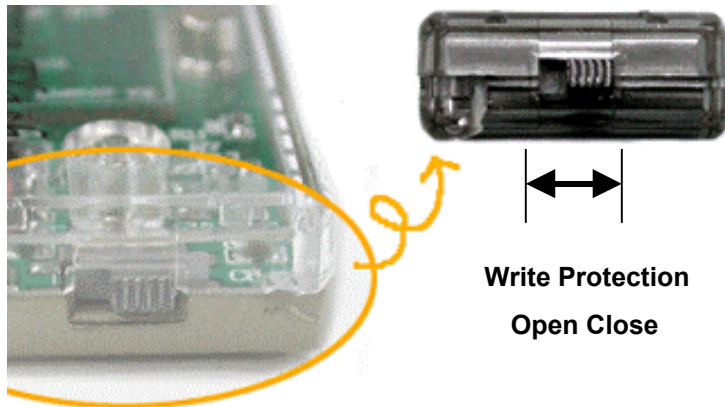
Q: What memory sizes are available for the e-Drive?

A: The memory sizes that are available for the e-Drive are, 8MB, 16MB, 32MB, 64MB, 128MB, 256MB, 512MB and 1GB, and in the near future, 2G will be coming.

Q: Does the e-Drive have a write protection feature?

A: Yes, the e-Drive has a write protection switch on the bottom side of the e-Drive. When the switch is opened, the data can be read and written from/to the e-

Drive, when it is closed, the data can only be read but cannot be written to the e-Drive.



Q: Which personal computer does the e-Drive support?

A: e-Drive supports all the PCs, which has a USB port connection and runs under the operating systems that the e-Drive supports. (Most of the PCs after 1997 have two USB connections)

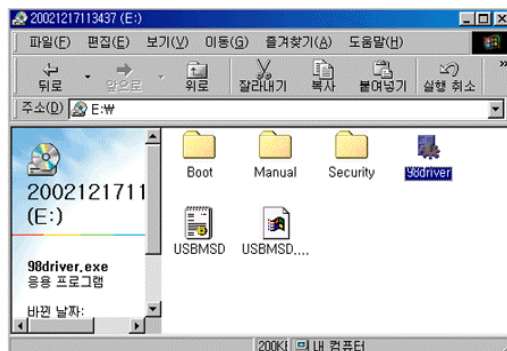
Q: Can the data on the e-Drive be shared in a networking environment?

A: Yes, the data can be shared in a networking environment, as long as the host machine enables the share function for the e-Drive.

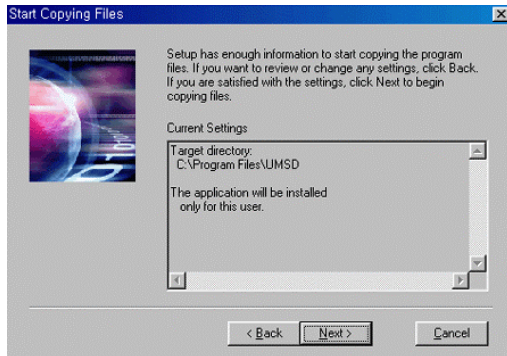
Q: How to set up USB driver for 98SE user?

A: The installing process is as follows.

1. Insert the bundled CD into CD-ROM and double-click the 98Driver folder.

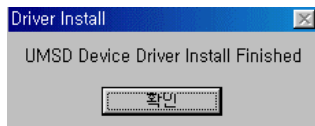


2. Click next.



3. Click the confirmation button of Drive Install Finished window.

The drive detects e-Drive automatically.



Q: Can the e-Drive be used as a boot disk?

A: Yes. The Bootup.exe program will build up the device as a bootable disk. Before you run the program, please do the following preparations,

1. Only Windows 98 supported.
2. Mainboard must be supported USB booting function. If mainboard is supported USB booting function, you must change 'First Boot Device' to 'USB-ZIP' at CMOS setup. (Accurate wording will be different according to mainboard).
3. When use USB booting function, you must cancel password.
4. Connect product, run 'Manage.exe' file in CD.
5. Check 'Make bootable Disk', click Format.
6. Warning windows appear. When make boot disk, all saved data are removed. So before making boot disk, all data must be backup.
7. After making booting disk, select product, you can see booting files are saved.
8. If booting files is not saved correctly, check files in \Windows\Command \EBD' folder. If file **doesn't** exist, download [EBD files](#) and install, make boot disk again.

Q: Does the e-Drive have security software?

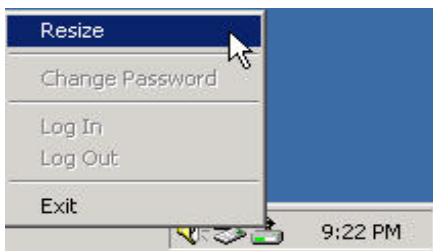
A: Yes. You can use security software to protect your information when your e-Drive is lost.

Q: How to use of the security software?

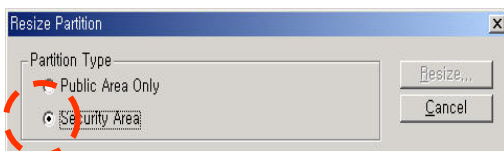
A: The default partition type is “ Single Public Area”.

In order to use the Security Mode, please click of Security file in the bundled CD. After you installed the software correctly, the e-Drive icon will appear in the notification area automatically.

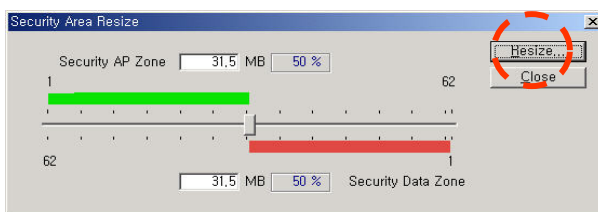
1. You can use the right button of your mouse to pop up the selection menus as the following figures.



2. Please select the radio button of Security Area.



3. The following “Security Area Resize” window will be appeared.



4. You can drag the scroll bar in the middle of the window to set the size of the “Security AP Zone” and “ Security Data Zone”.

5. After finished the setting, click the “Resize” button.

6. The “Confirmation” window will be popped up. Please make sure you already backup the important files or data.

7. Once the resize finished, the “Resize Information” is appeared.

8. Please unplug the device from the USB port and the Plug it into USB port again.

☞ When you finished the process for Security Mode, the device is divided into “Security AP Zone” and “Security Data Zone”.

As like “Single Public Area” you can use “Security AP Zone” without any Password.

For using “Security Data Zone”, double click the e-Drive icon in the notification window or select the [Login] of the menu.

9. Key in the password in the “Password (Security Data Zone)” area. the default password is “0000”.



☞ You can create the password hint in the “Unlock Protect” window as well as can change the password.

In order you to see the data in the “Security AP Zone” you have to [Logout] from the menu in the notification.

Q: Can the e-Drive be formatted? How?

A: Yes, the e-Drive can be formatted under Windows 98SE, Windows ME and Windows 2000, using normal formatting function.

Q: Can the e-Drive be used under DOS environment?

A: No, because DOS does not support USB devices, so the e-Drive cannot be used under DOS environment.

Q: If the e-Drive is dropped in water, what should I do?

A: Dry the e-Drive thoroughly before using the e-Drive again. Otherwise it may

cause a short circuit when inserted into the USB port.

Q: What are the applications for e-Drive?

A:

- (a) It can transfer files more than 1.44MB
- (b) Laptop users found that the e-Drive reduces the bulk and weight of the equipment that they must carry when using laptop computers.
- (c) Put hundreds of photos on a e-Drive, it becomes a small, portable photo album.
- (d) For people who need to work both at the office and at home, e-Drive eliminates the slow data transfer, unreliable and frustration of sending large data by e-mail.
- (e) Physical security of the e-Drive helps to keep confidential data secure.
- (f) For environments with dust, pet hair or other environment conditions that cause unreliable operation of floppies and other removable medias, the e-Drive offers a faster, smaller and more reliable alternative.

Q: What interfaces does the e-Drive supports?

A: The e-Drive only supports the USB interface. The e-Drive can be inserted directly into any USB port or connected to the computer through a USB cable with A-type plug and A-type receptacle.

Q: How many times can the e-Drive be used and how long can the data be stored on the e-Drive?

A: The e-Drive can write and erase at least 1 million times, while data on the e-Drive can be stored more than 10 years.

Q: What operating systems will the e-Drive NOT support?

A: The e-Drive will not support Windows 95 or Windows NT, since both of these operating systems does not support USB devices.

Q: How many e-Drive can I connect to a single computer?

A: In theory, USB allows 127 e-Drive to be connected to a single PC, but practically under Windows operating system, due to the alphabetical ordering of the disk drive and existing drives; the maximum e-Drive that can be connected to a single PC is 23 by using USB hubs.

Q: What type of memories does the e-Drive use?

A: The e-Drive uses highly reliable and non-volatile flash memory.

Q: Can other programs be running at the same time while using e-Drive?

A: Yes, other programs/applications can be running at the same time while using e-Drive.

Q: Can ScanDisk be used with the e-Drive?

A: Yes, ScanDisk can be used with the e-Drive.

Q: Does e-Drive resist vibration, magnetic fields and humidity?

A: The e-Drive is highly resistant to vibration and can be operated under wide ranges of magnetic fields and humidity.

Q: When an application such as Word or Excel is running, what happen if I pull the e-Drive out?

A: If an application is running and you pull out the e-Drive, the computer screen will go blank. Just press the "Esc" key to return to normal

Q: What should I do if the e-Drive icon does not appear/disappear on the screen after inserting/extracting?

A: Simply click the "View" menu and select "Refresh".

Q: What precautions should be taken while using the e-Drive?

A: Wait for a few seconds upon inserting and removing of the e-Drive, to give time to the operating system to recognize the e-Drive. Avoid removing immediately after inserting the e-Drive or performing repetitive insertions / removals.

Q: What happen if I dropped the e-Drive?

A: There is no need to worry about dropping the e-Drive, because e-Drive is highly shock proof.

Q: What are the differences between the e-Drive and Compact Flash, Smart Media card, Multimedia card, Memory Stick, Secure Digital card and USB hard disk drive?

A: The advantage of the e-Drive over all the different memory cards is that it can be connected to the USB port directly and the data can be accessed without an external card reader, and the flash memory storage products and drives are not compatible to each other.

USB hard disk drive is much heavier and more delicate than the e-Drive. It is only a hard disk drive with a USB interface. e-Drive is much smaller, lighter and rugged. It's more ideal for mobile use.

Q: Can e-Drive work in Windows NT?

A: No. Since Windows NT does not support USB devices, therefore, e-Drive cannot work under Windows NT environment.

Q: USB devices for Mac.

A: For multiple devices, a driver is needed for Mac (OS 8.6~9.1). Where as for single device and e-Drive, no driver is needed. But, both need USB support 1.3.x or above. For Mac OS 8.6, to check which USB support it is, one way is to select USB Support in Extensions of System Folder and Get Info (in File menu). (Please check <http://developer.apple.com/hardware/usb/versionusb.htm>.)